

How to Increase the Bandwidth of Digital Potentiometers 10x to 100x

A simple circuit technique is described to increase the bandwidth of digital potentiometers by a factor of 10 to 100 times. Using this technique can enable digital potentiometers to be used in high frequency applications at video bandwidths.

Digital potentiometers (or digital pots, or digipots) are extremely useful for controlling or adjusting circuit parameters. Normally they are only used in DC or low frequency applications due to the inherent bandwidth limitations of the digital pots. Typical -3dB bandwidths are from 100kHz to several MHz, depending on the part. However, by using the simple technique described below, you can increase the signal bandwidths of a potentiometer circuit by 10 to 100 times. You can achieve 0.1dB bandwidths of 13MHz and -3dB bandwidths of over 80MHz. Using this technique, digital pots become a viable option for video or other high-speed applications.

Limited Adjustment Range

The technique takes advantage of the fact that in many digital potentiometer applications, the pot is used to fine tune the signal and does not need the full adjustment range of 0% to 100%. Examples are a one-time factory calibration. In these instances, the digital pots usually provide an overall adjustment range of 10% or less. It is this limited adjustment range which is the key to the bandwidth improvements.

Typical Applications Circuit

A typical potentiometer circuit configuration is shown in Figure 1. Here, a digital pot is used to vary the attenuation of a signal. The Digital Pot is R2 and its parasitic capacitance (C_{wiper}) is also shown. This capacitance is inherent to all digital pots, and is what limits the circuit bandwidth. R1 and R3 are used to limit the signal attenuation caused by the digital pot, as the pot code swings from 0 code to full-scale code.

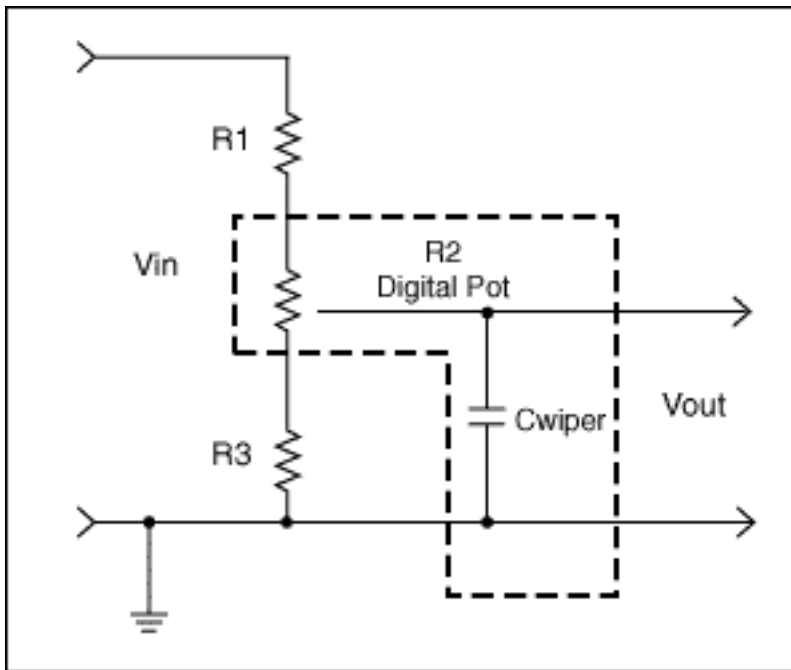


Figure 1. Typical Digital Potentiometer circuit configuration.

NOTE: With the inclusion of an op amp, the circuit can be used for gain, as well as attenuation. However, regardless of the circuit topology chosen, the method for increasing bandwidth - illustrated below - applies.

To calculate the transfer function of the circuit (V_{OUT} / V_{IN}), it is useful to use a different model for the potentiometer - see Figure 2. In this figure, R_2 has been broken into R_{2top} and $R_{2bottom}$, where R_{2top} is the portion of the resistance above the wiper, and $R_{2bottom}$ is the portion of the resistance below the wiper. Assuming we are using a pot with a $10k\Omega$ end-to-end resistance (and neglecting the affect of wiper resistance), the ideal transfer function of R_{2top} and $R_{2bottom}$ vs. digital code is as shown in Figure 3. The two end-points and the mid-point of the transfer function are useful to note:

- (1) When the Pot code = 0, $R_{2top} = 10k\Omega$ and $R_{2bottom} = 0k\Omega$
- (2) When the Pot code = Mid-Scale, $R_{2top} = R_{2bottom} = 5k\Omega$
- (3) When the Pot code = Full-Scale, $R_{2top} = 0k\Omega$ and $R_{2bottom} = 10k\Omega$

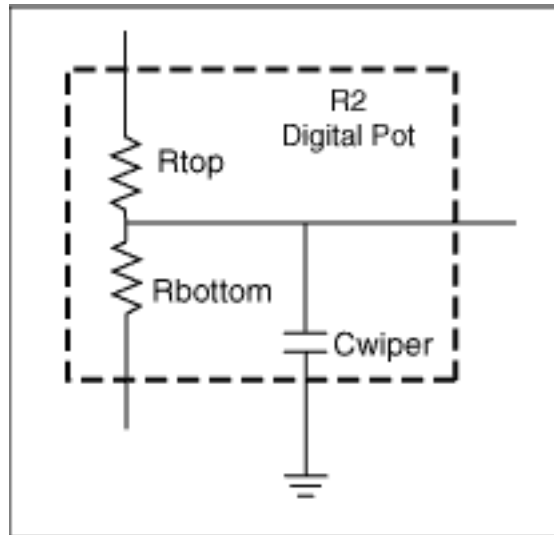


Figure 2. The digital Pot with R2 broken into R2_{top} and R2_{bottom}.

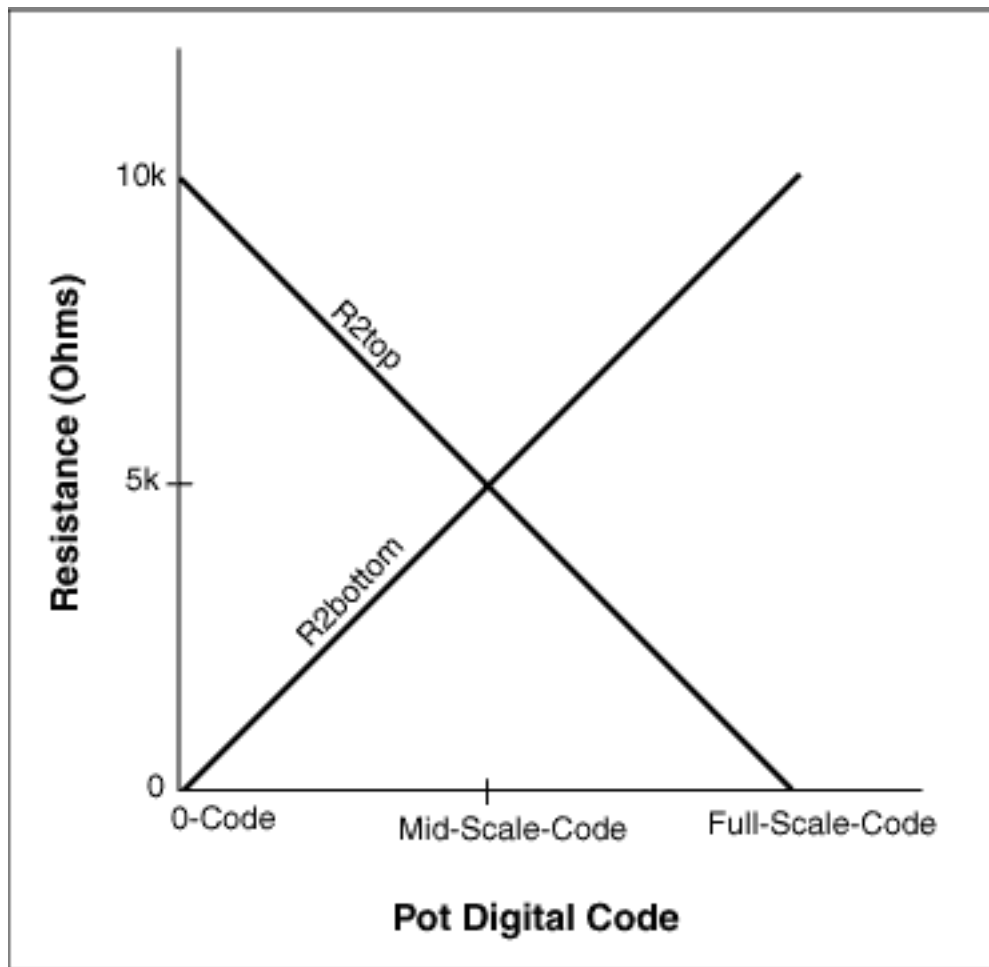


Figure 3. Digital Pot Ideal Transfer Function.

Inspection of Figure 4 yields the dc transfer function for V_{OUT}/V_{IN} :

$$(4) V_{OUT} / V_{IN} = (R_3 + R_{2bottom}) / (R_1 + R_2 + R_3), \text{ where } R_2 = R_{2top} + R_{2bottom}$$

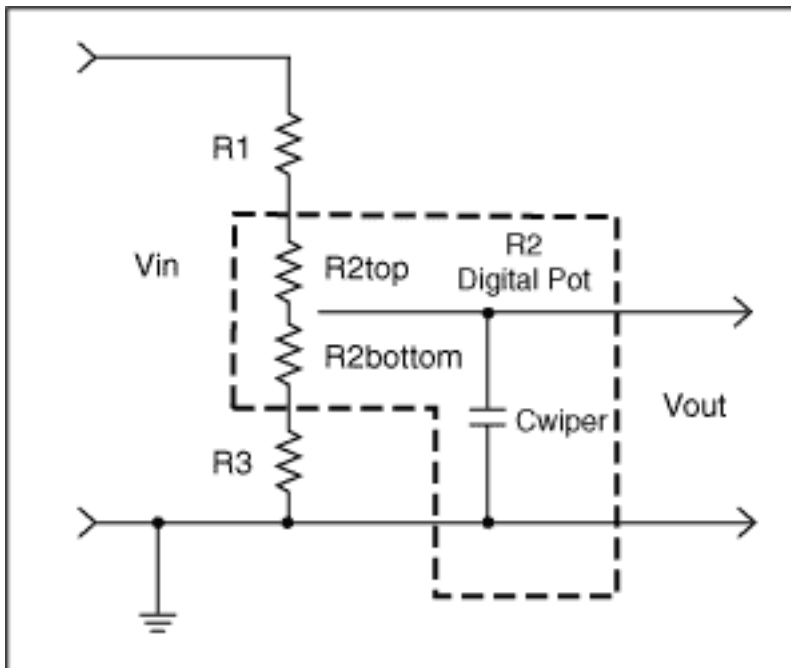


Figure 4. Typical Digital Potentiometer circuit configuration with new model for digital potentiometer.

Next, let's make some assumptions:

Assumptions

Assume $R2 = 10k\Omega$ (a common digital pot resistance value), and assume we want to attenuate the incoming signal to some arbitrary level, say $70\% \pm 5\%$ of its input value (i.e. from 65% to 75% of its input value).

Then using equations (1) - (4), we can see that an adjustment range of 65% to 75%, with a nominal (mid-scale setting) of 70% occurs for:

$$(5) R1 = 24.9k \text{ and } R3 = 64.9k.$$

Bandwidth of Typical Applications Circuit

Using the resistance values of Equation (5), and assuming $C_{wiper} = 10pF$, we get the bandwidths as listed in Table 1. Actual wiper capacitance can vary from 3pF to over 80pF, and is function of wiper resistance, the number of steps, the IC process used, and the pot architecture used, among other things. 3-10pF of capacitance is fairly representative for 3V to 5V, $10k\Omega$ pots, with 32 to 256 steps.

Note that the analysis in this article assumes that it is solely the wiper capacitance in parallel with the pot resistance, which sets the bandwidth. This is valid for relatively straightforward implementations of digital pots, but the bandwidth can be limited even more, if more complicated pot implementations are used. That said, however, the discussions below on improving bandwidth are valid, even though the actual bandwidths one gets might not match exactly what one would initially expect.

Table 1. Bandwidth of Circuit of Figure 1, with Resistance Values of Equation 5

Condition	Cwiper = 10pF*		
	-0.1dB bandwidth	-0.5dB bandwidth	-3dB Bandwidth
Pot at 0 Code	106kHz	245kHz	702kHz
Pot at Mid Scale	115kHz	265kHz	760kHz
Pot at Full Scale	130kHz	296kHz	852kHz

*Note the bandwidth scales inversely with wiper capacitance. For example, with a 3pF Cwiper, the bandwidths will be at a 3.3x higher frequency (i.e. 10/3).

These bandwidths are too low for applications such as video.

Increasing Circuit Bandwidth

Using Pot with Lower Resistance

One obvious method of increasing the circuit bandwidth is to choose a digital pot with a lower impedance, such as 1k Ω pot, and then scale R1 and R2 accordingly (make them 10 times smaller for a 1k Ω pot than for the circuit with a 10k Ω pot). However, to get digital pots with this low impedance (1k Ω) generally involves a larger die size, which typically translates into higher cost and larger package size, and for this reason, there is a limited availability of pots at 1k Ω .

However, if one is available that meets your design needs, the bandwidths quoted above with a 10k Ω pot will increase linearly with the reduction in impedance, i.e. 10 times (assuming the parasitic wiper capacitance doesn't change).

For example, using a 1k Ω pot, and setting R4 = 2.49k and R6 = 6.49k, we get a -0.1dB bandwidth of 1.15MHz and a 7.6MHz -3dB bandwidth, with a 10pF wiper capacitance, and with the pot set at mid scale. This is 10 times the bandwidth shown in Table 1, as expected.

Using 10k Ω Pot and Changing Circuit Topology

Using a High-Resolution Pot and Restricting the Codes

Compared to 1k Ω pots, there is a much better selection of 5k Ω and 10k Ω pots to choose from - with more pots available in small packages, more with either volatile or non-volatile memory, and more with various digital interfaces to choose from (up/down, I2C, SPI) and more with various amounts of adjustment steps (32, 64, 128, 256, etc.) to choose from. It was for this reason that a pot with 10k Ω end-to-end resistance was chosen for the following design example.

Assume due to cost, size, the desired interface, and the required number of pot adjustment steps that it's desirable to use a pot with a 10k Ω end-to-end resistance; how should one go about increasing the bandwidth of the circuit in Figure 1?

One method of increasing bandwidth is to eliminate resistors R4 and R6, and simply use a pot with more steps than would be required in the circuit of Figure 1. For example, instead of using a 32 step pot, and getting a 10% adjustment range, as discussed above, you could use a 256 step pot, remove R4 and R6, and simply limit the adjustment range of the pot to those codes that provide the desired attenuation - let's continue with the design target from above - 65% to 75%. This method is illustrated in Figure 5. The codes to use are those from code $0.65 \times 256 (=166.4)$, use 166) to code $0.75 \times 256 (=192)$. A 256-step pot was used in this example; since the restricted use of codes limits the number of usable steps to 26 (i.e. an adjustment range of about 10% uses about 10% of the available 256 steps). This 26 step usable range corresponds closely to the 32 step range in the examples above.

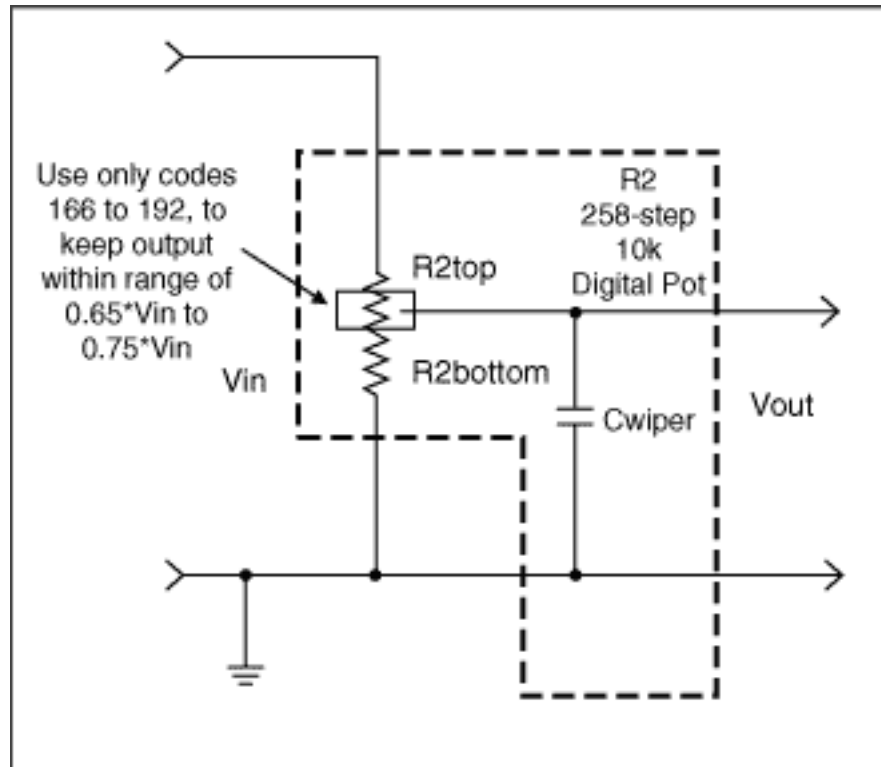


Figure 5. Using only some of the codes of a high-resolution (256-step) pot to achieve an adjustment range of 0.65 to 0.75.

One drawback of this approach, however, is that it tends to cost more to get a pot with 256 steps than one with 32 steps, and the available pots tend to come in larger packages (the extra switches required for the extra resolution - i.e. 256 steps vs. 32 steps - takes extra die area, and also these switches have the undesirable quality of increasing C_{wiper}). Assuming a C_{wiper} of 30pF, at $V_{OUT}/V_{IN} = 0.70$ - the mid-point of our adjustment range - the circuit of Figure 5 has a -0.1dB bandwidth of 384kHz, a -0.5dB bandwidth of 879kHz, and a -3dB bandwidth of 2.52MHz. This is an improvement from the results shown in Table 1 of about a factor of three.

A less-costly solution, that will also provide much better performance, is to add some discrete resistors to the circuit of Figure 1, as shown in Figure 6.

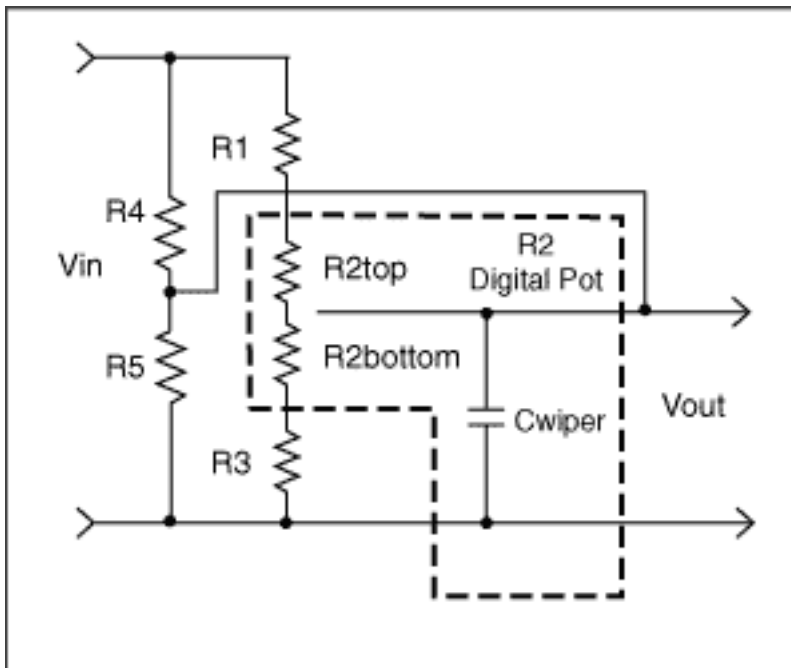


Figure 6. Using two resistors ($R4$ and $R5$) in parallel with the original circuit, to increase bandwidth 100 times over Figures 1 and 2.

Using a Parallel Resistor String to Lower the Circuit Impedance

The circuit of Figure 6, adds a parallel resistor string to that of Figure 1 (note the use of the model for a digital pot introduced in Figure 2). This parallel string lowers the impedance of the circuit (thus improving its bandwidth), and it also does double duty by setting the gain of the circuit and limiting the attenuation caused by the digital pot as it swings from 0-Code to Full-Scale Code.

Setting the gain of the potentiometer circuit and limiting its adjustment range by using parallel devices ($R4$ and $R5$), instead of by simply only using series devices $R1$, $R2$ and $R3$, is what allows this circuit to achieve better bandwidths than those of Figure 1.

It should also be noted that resistors $R1$, $R2$, and $R3$ also affect the gain of the circuit, but since their series resistance is so much larger than $R4$ and $R5$, their affect is minimized.

The affect of $R4$ and $R5$ on the circuit of Figure 6 can be best understood by a few simplifications. In Figure 7, the resistors in the top part of the circuit are combined using the equation in that figure. Note that since $R4$ is in parallel with $R1$ and $R2_{top}$, it lowers the circuit impedance.

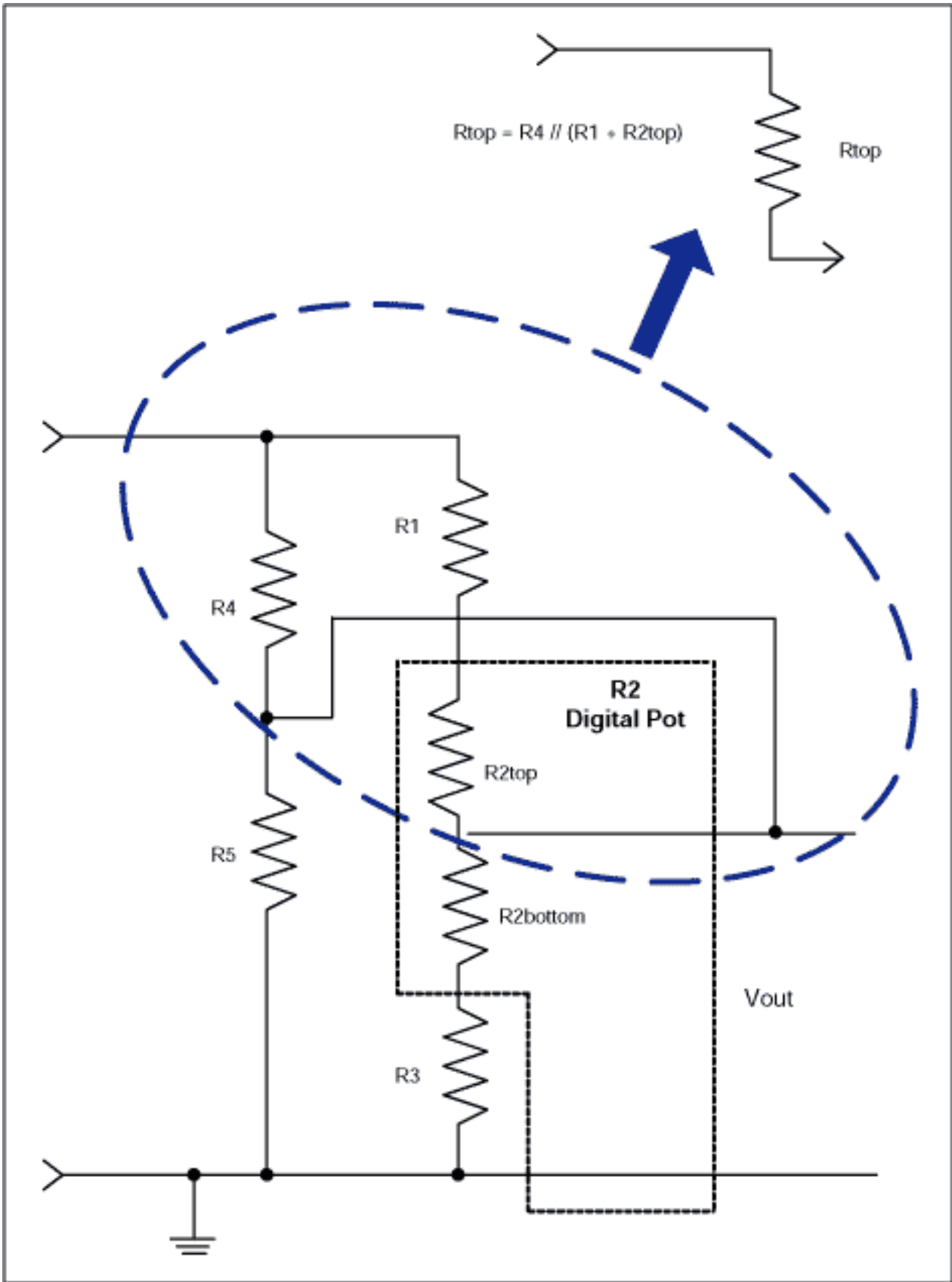


Figure 7. Simplifying the resistors in the "top" part of the circuit.

In Figure 8, the resistors in the bottom part of the circuit are combined using the equation in that figure. Note that since R5 is in parallel with R3 and R2_{bottom}, it too lowers the circuit impedance. It is this lowered circuit impedance that gives us the dramatic bandwidth gains which

we're searching for.

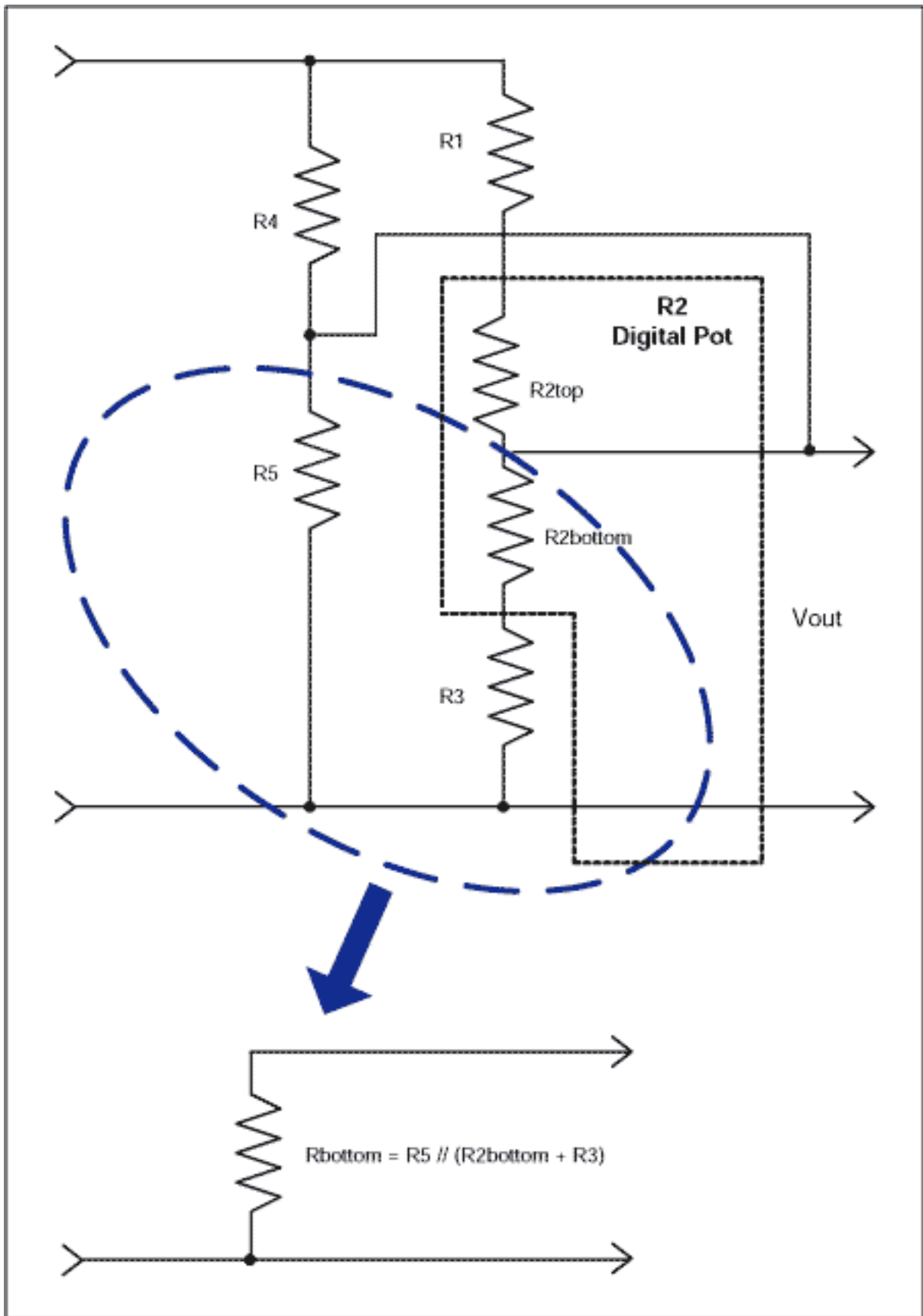


Figure 8. Simplifying the resistors in the "bottom" part of the circuit.

Figure 9 combines both simplifications from the previous figures, and gives the equations for the

V_{OUT}/V_{IN} transfer function. It should be clear from this figure that by lowering the impedance of the circuit (R_{top} is lower than $R_1 + R_{2top}$, R_{bottom} is lower impedance than $R_{2bottom} + R_3$), the bandwidth of the circuit has increased.

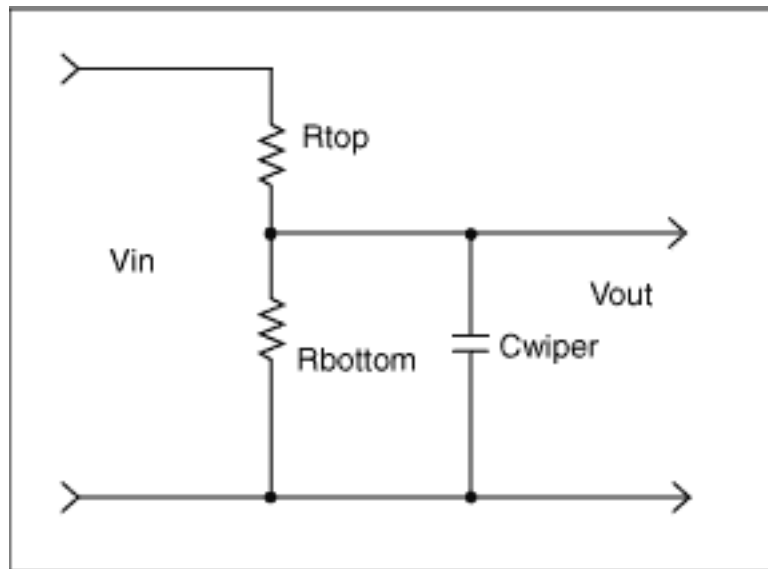


Figure 9. Circuit with the simplifications of Figures 7 and 8.

Actual Values

By plugging in some actual values for R_1 , R_3 , R_4 , and R_5 , we can compare the resultant bandwidth to that achieved for the circuit of Figure 1, and thus quantify the effect of R_4 and R_5 on the circuit performance.

Using the equations in Figure 9, we can come up with values for R_1 , R_3 , R_4 , and R_5 , and can then calculate the resultant bandwidths.

Using a spreadsheet, one can find component values that satisfy the equations in Figure 9:

$$(6) R_1 = 3.48k, R_2 = 10k, R_3 = 4.53k, R_4 = 1k\Omega, \text{ and } R_5 = 2.8k.$$

These component values result in the bandwidths listed in Table 2. Note these results show a greater than a 100 times improvement from the circuit of Figure 1, whose data are listed in Table 1!!

Table 2. Bandwidth of the circuit of Figure 6, with Resistance Values of Equation 6.

Condition	$C_{wiper} = 10pF^*$		
	-0.1dB bandwidth	-0.5dB bandwidth	-3dB Bandwidth
Pot at 0 Code	13.4MHz	30.6MHz	87.4MHz
Pot at Mid Scale	12.8MHz	29.3MHz	83.6MHz

Pot at Full Scale	13.9MHz	31.7MHz	90.7MHz
-------------------	---------	---------	---------

*Note the bandwidth scales inversely with wiper capacitance. For example, with a 3pF Cwiper, the bandwidths will be at a 3.3x higher frequency (i.e. 10/3).

Summary

This article has shown how by simply adding a few resistors in parallel with a relatively low bandwidth digital potentiometer the resulting bandwidth can be increased by a factor of 100, a significant improvement. This assumes that the applications can tolerate the reduced control range necessary for the improvement. The increased bandwidth can enable the use of digital pots for high frequency applications, previously not considered, such as video signal path control.

More Information

- DS1267: [QuickView](#) -- [Full \(PDF\) Data Sheet](#) -- [Free Samples](#)
- DS1669: [QuickView](#) -- [Full \(PDF\) Data Sheet](#)
- DS1803: [QuickView](#) -- [Full \(PDF\) Data Sheet](#) -- [Free Samples](#)
- DS1805: [QuickView](#) -- [Full \(PDF\) Data Sheet](#) -- [Free Samples](#)
- DS1806: [QuickView](#) -- [Full \(PDF\) Data Sheet](#) -- [Free Samples](#)
- DS1809: [QuickView](#) -- [Full \(PDF\) Data Sheet](#) -- [Free Samples](#)
- DS1844: [QuickView](#) -- [Full \(PDF\) Data Sheet](#) -- [Free Samples](#)
- DS1867: [QuickView](#) -- [Full \(PDF\) Data Sheet](#) -- [Free Samples](#)
- DS1868: [QuickView](#) -- [Full \(PDF\) Data Sheet](#) -- [Free Samples](#)
- DS1869: [QuickView](#) -- [Full \(PDF\) Data Sheet](#) -- [Free Samples](#)
- MAX5402: [QuickView](#) -- [Full \(PDF\) Data Sheet](#) -- [Free Samples](#)
- MAX5403: [QuickView](#) -- [Full \(PDF\) Data Sheet](#) -- [Free Samples](#)
- MAX5413: [QuickView](#) -- [Full \(PDF\) Data Sheet](#) -- [Free Samples](#)
- MAX5450: [QuickView](#) -- [Full \(PDF\) Data Sheet](#) -- [Free Samples](#)
- MAX5451: [QuickView](#) -- [Full \(PDF\) Data Sheet](#) -- [Free Samples](#)